



日燭國際事業股份有限公司
JD Auspice Co., Ltd.

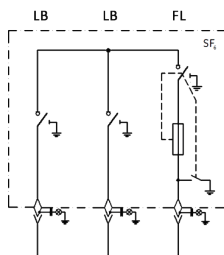
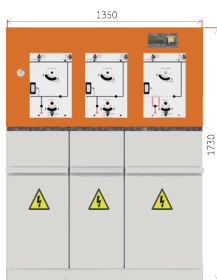
JDA Ring Main Unit RMU 3路 4路環路開關



一次側防護等級IP67

✓ 易操作
✓ 安全 ✓ 專業

RC 36 2LB 1FL



GAS INSULATED SWITCHGEARS	
Rated Voltage	36 kV (rms)
Rated Power-Frequency Withstand Voltage (1min.)	70 kV (rms)
Rated Lightning Impulse Withstand Voltage (1.2/50μsec.)	170 kV (Peak)
Rated Frequency	50/60 Hz
Rated Busbar Current	630 A
Rated Feeder Current	LB:630 A / FL:200 A
Rated Short Time Withstand Current	16-21 kA (rms)
Rated Duration of Short Circuit	1 s
Rated Peak Withstand Current	40 / 52,5 kA (Peak)
Insulation Material	SF6
Relative Leakage Rate (per year)	% ≤0.5
Internal arc classification	A FL
Rated Arc Fault Current	16 kA
Rated Arc Fault Duration	1 s
Loss of Service Continuity Category	LSC2
Partition Class (CrNi and galvanized steel sheet)	PM
Protection Degree for Primary Live Parts	IP67
Protection Degree for External Enclosure	IP3X
Ambient Air Temperature	-25 , +40 °C *
Relative Humidity (20 OC)	<95 %
Altitudes	≤1000 m **
Accessibility	
Switching Compartment	Non-accessible
Busbar Compartment	Non-accessible
Mechanism Compartment / Operating Parts	Tool and Interlock based
Cable Compartment	Interlock based access

- Smart Interlock & Custom-Designed Control Panel:** Safe and easy operation.
- Limitless Accessibility:** A FL 16 kA (1s) IAC Class (A FLR Class with rear side arc chimney)
- Flexible and Extensible Modularity and Design:** flexibility with removable solid bus bar system; Flexible solution for easy operation. Fast & Easy Assemble-Disassemble.
- Switching Equipment and optional connections** for VTs are all contained in a single, SF6-filled, robot welded tank for a high quality sealing; safe for humid environments. Protected against any environmental effect with IP68 protection class.

LOAD BREAK SWITCH & LOAD BREAK SWITCH-FUSE COMBINATION	
Rated Voltage	36 kV (rms)
Between phases, phase to earth and Open contact gap	70 kV (rms)
Across the isolating distance	80 kV (rms)
Between phases, phase to earth and Open contact gap	170 kV (Peak)
Across the isolating distance	195 kV (Peak)
Rated Frequency	50/60 Hz
Rated Normal Current	630/200 A
Rated Short Time Withstand Current	16/21 kA (rms)
Rated Duration of Short Circuit	1 s
Rated Peak Withstand Current	40/52,5 kA (Peak)

*Consult EKOSinerji Representative for higher limits.

**Consult EKOSinerji Representative for applications higher than 1000 m

